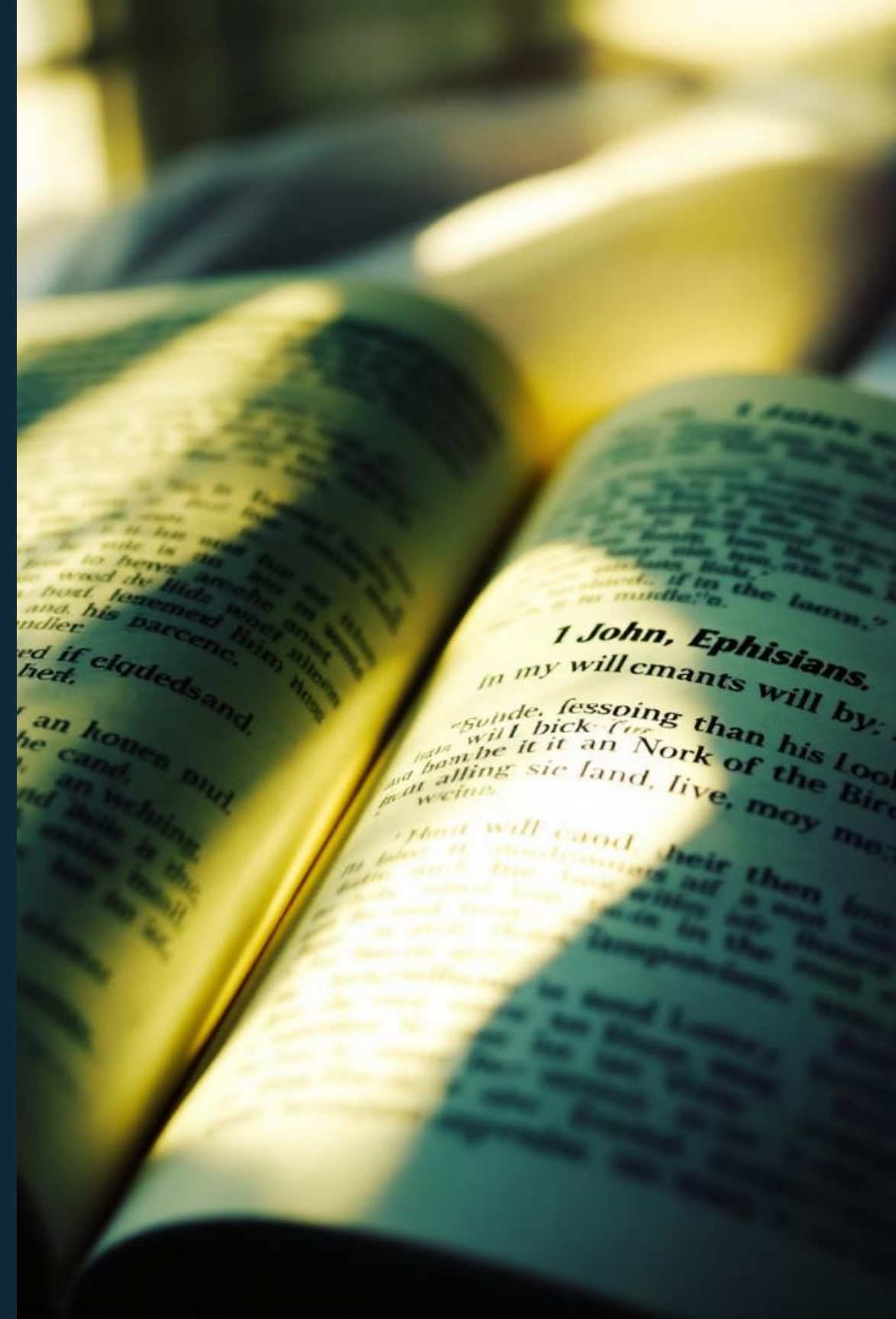


Exploring 1 John 4:13-16 and and Ephesians: Themes of Divine Love and Unity

This presentation examines the core themes of 1 John 4:13-16 and their development in Paul's letter to the Ephesians, revealing the interconnectedness of love, faith, and the indwelling Spirit in Christian theology.



Thought Block Bible Study



Key Themes in 1 John 4:13-16

16

■ Mutual Indwelling

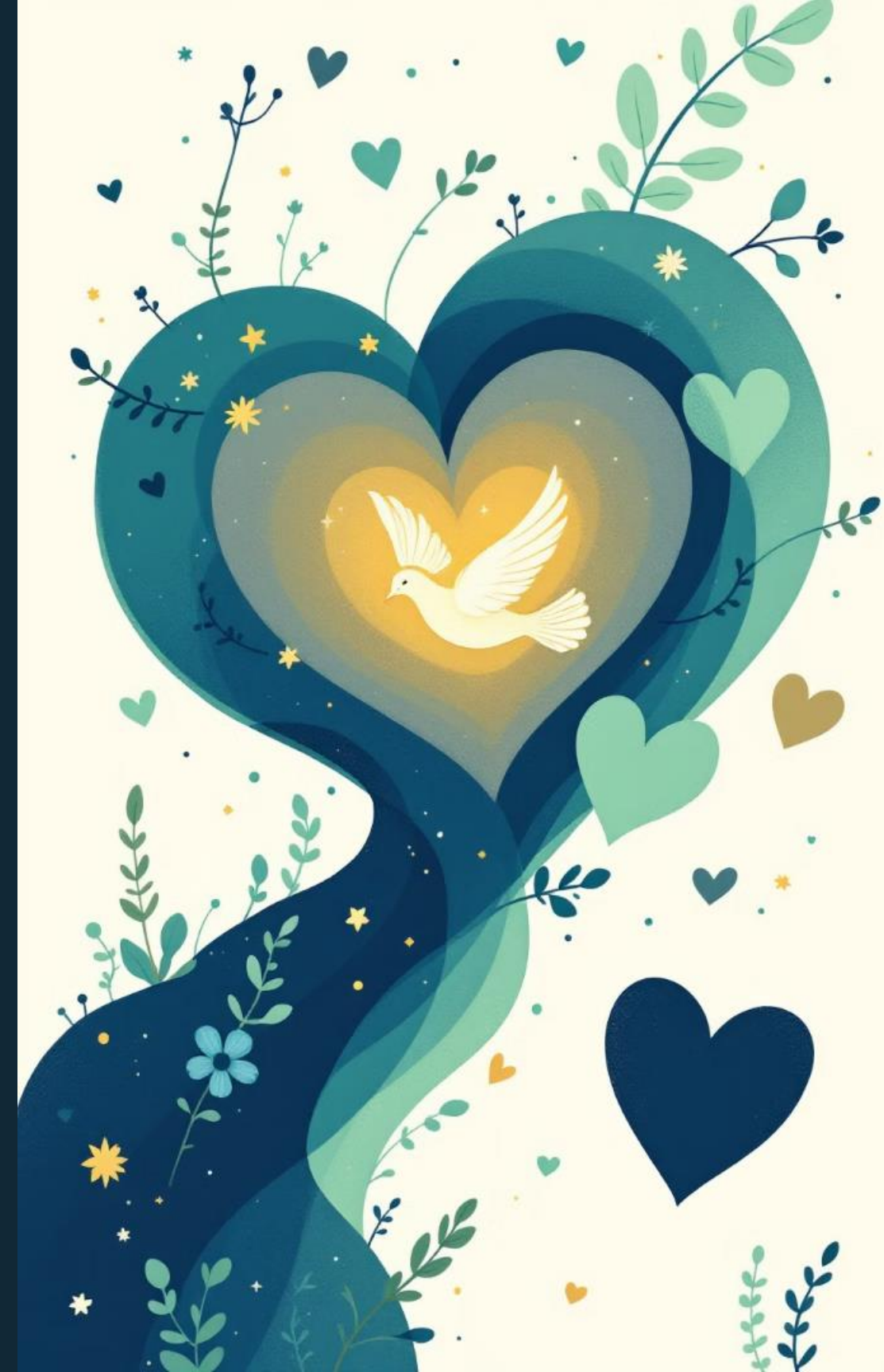
Believers abide in God, and God in them through the Spirit.

■ Christ as Savior

The Father sent the Son as the Savior of the world.

■ God is Love

Those who abide in love abide in God, for God is love.



Abiding in God through the Spirit

1 John 4:13

The presence of the Spirit confirms the confirms the believer's relationship relationship with God.

Ephesians 1:13-14

The Holy Spirit is described as a seal seal and guarantee of salvation.

Ephesians 2:22

Believers are portrayed as a dwelling dwelling place for God through the the Spirit.



Christ as Savior

1

1 John 4:14

Testimony that the Father sent the Son as Savior of the world.

2

Ephesians 1:7

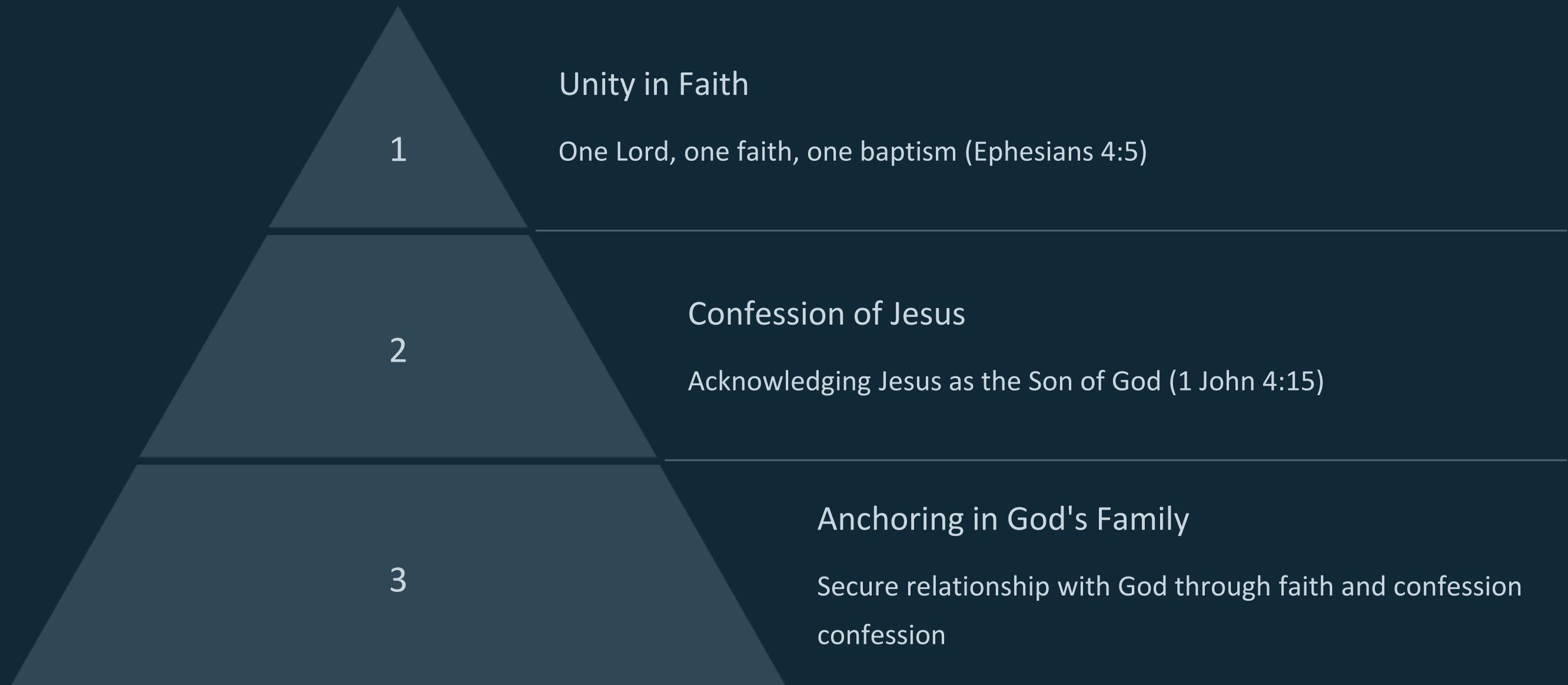
Redemption through Christ's blood, emphasizing forgiveness of sins.

3

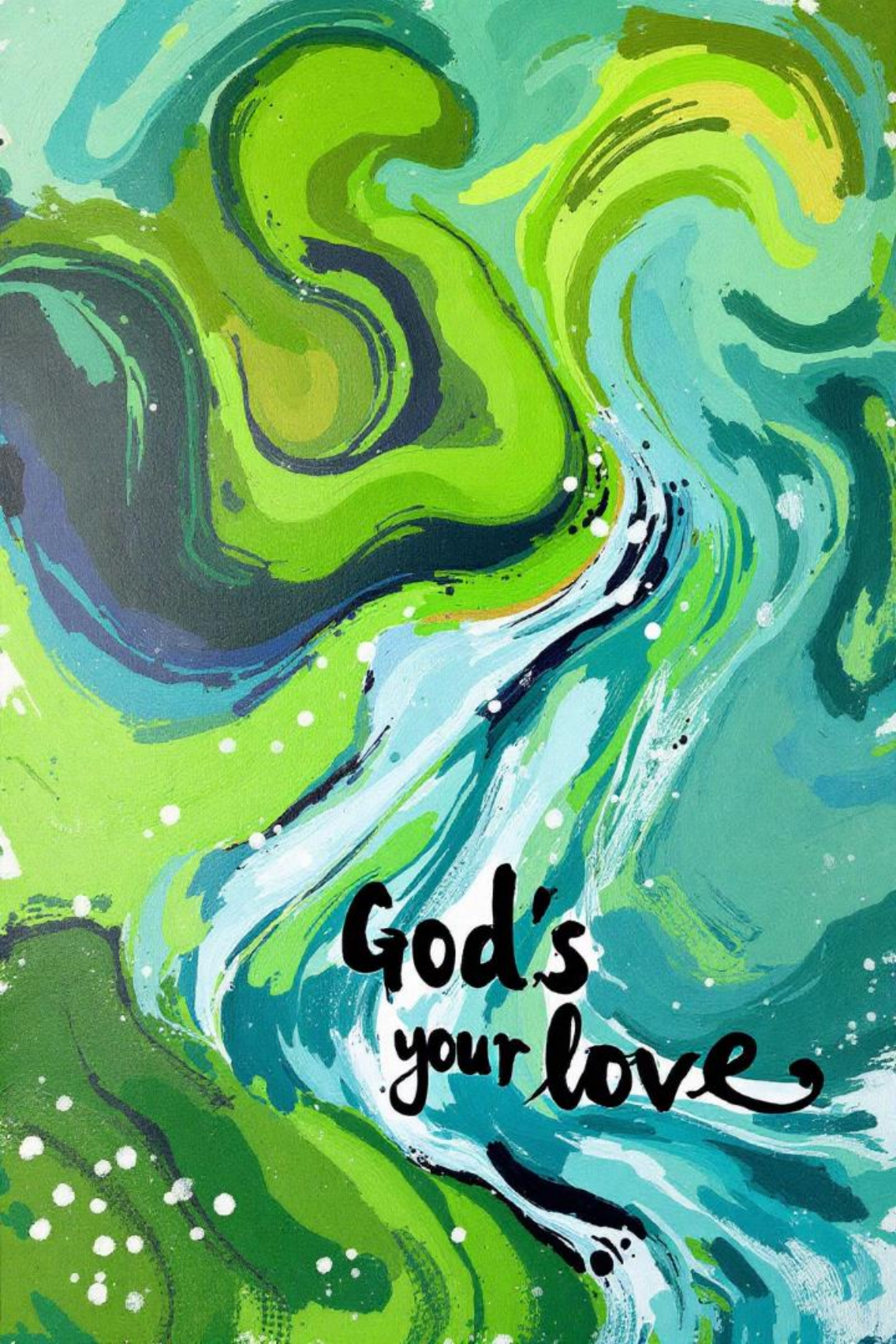
Ephesians 2:13-16

Christ breaks down divisions, offering universal salvation and reconciliation.

Confession and Unity in Christ



God's Love and Its Manifestation



1

God is Love

1 John 4:16 defines God's essential nature as love.

2

Rooted in Love

Ephesians 3:17-19 encourages understanding the vast dimensions of God's love.

3

Walk in Love

Ephesians 5:1-2 exhorts believers to imitate God's love in daily life.

Synthesis of Themes

Transformative Power

Both epistles emphasize the life-changing nature of God's love.

Christ's Centrality

Jesus' redemptive work is crucial in both 1 John and Ephesians.

Spirit's Role

The Holy Spirit maintains communion between believers and God.

Church Unity

Ephesians elaborates on themes within the context of church unity.



Conclusion: A Unified Vision of Faith



Divine Love

The foundation and expression of God's relationship with believers.



Salvation in Christ

Jesus as the central figure in God's redemptive plan.



Indwelling Spirit

The Holy Spirit as the seal and facilitator of divine-human communion.

This analysis reveals the profound interconnectedness of love, faith, and the Spirit in early Christian theology, providing a rich foundation for further study and spiritual reflection.